



**SWISS TRAFFIC**  
*we innovate mobility*

**SWIROO**  
PART OF SWISSTRAFFIC

## AI | BlueScan



BlueScan records journey and lost times in real time for both individual traffic and cycling. Weak points can thus be analysed and traffic distributions or connections optimised.

### TIME IS A VALUABLE RESOURCE

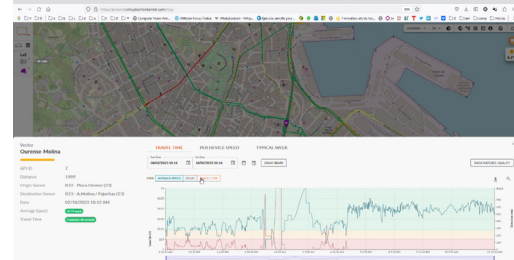
Early information can positively change the mobility behaviour of road users. By incorporating AI in combination with the measurement of real traffic events, reliable predictions can be made regarding travel and lost times.

### TARGETED IMPACT ANALYSES

Statements about the effect of infrastructure projects or accompanying measures over a longer period of time are effectively best substantiated by travel time gains (or losses).



Determine travel and lost times on various routes in real time and optimise traffic flow, with LED display



Clear and comprehensive dashboard



BlueScan, the all-in-one detector for urban mobility.



## IDEAL APPLICATION AREAS

Analysing travel and loss times  
Section speeds  
Effectiveness analyses

## TECHNICAL FEATURES

Bluetooth (12dB), BLE (4dB), WiFi (4dB)  
Permanent metering point or mobile  
7 days autonomy when mobile  
Speeds  
Realtime data, GPS, 4G-modem  
LED display  
3 vehicle classes  
Personal dashboard

## COMBINABLE PRODUCTS

swissANPR AI  
swissSERVICES



SUBJECT	DESCRIPTION
Sensor	<ul style="list-style-type: none"> <li>All-in-one detector for urban mobility</li> <li>Travel time, source/destination matrices, event functions</li> <li>Detection Mac addresses of Bluetooth, WLAN and BLE devices</li> <li>4G Dual-Sim, Ethernet, GPS, Multi-color LED, RTC back-up battery</li> <li>Directional antenna 15dB for Bluetooth integrated, external omni-antenna for WLAN and BLE</li> <li>Field-tested, Simple setup and configuration, multi-track, contactless device detection</li> <li>Cost-efficient, low power consumption, self-diagnosis, reliability</li> <li>Compliance with all currently specified German data protection regulations or the EU General Data Protection Regulation and IT security regulations</li> </ul>
Detection	<ul style="list-style-type: none"> <li>Detects all standard Bluetooth versions -102dB Reception sensitivity with internal directional antenna <math>\geq 500m, \leq 320 km/h</math></li> <li>Wi-Fi 6 IEEE 802.11 and earlier</li> <li>BLE (Bluetooth Low Energy) 5.2 and earlier</li> <li>Detection it OMNI antenna <math>\varnothing 100m, \leq 200 km/h</math></li> <li>Integration radar, video, pollutant detection</li> <li>FCD, V2X and C-V2X via VCC</li> </ul>

**POWER SUPPLY**

12-48 VDC  
POE connector  
Typical 3.8 watts with modem  
Typical 1.8 watts without modem

**SYSTEM**

ARM 9 CPU prozessor  
128 GB micro SD card memory  
Linux-based operating system  
Int. operation and diagnostic LED  
Advanced encryption

**COMMUNICATIONS**

Ethernet  
Optional 4G/LTE (Dual SIM)  
Optional RS232/RS485  
MQTT Remote Maintenance Access

**ENVIRONMENT**

-40°C to +80°C  
0-90% relative humidity  
Enclosure IP 67  
Shock/Vibration: NEMA TS2-2003

**DIMENSIONS**

H x W x L 276 x 272 x 96,5 mm

**WEIGHT**

2 kg

**STANDARDS**

RoHS compliant  
CE, FCC, IC certified



## Multisource Control Center MCC

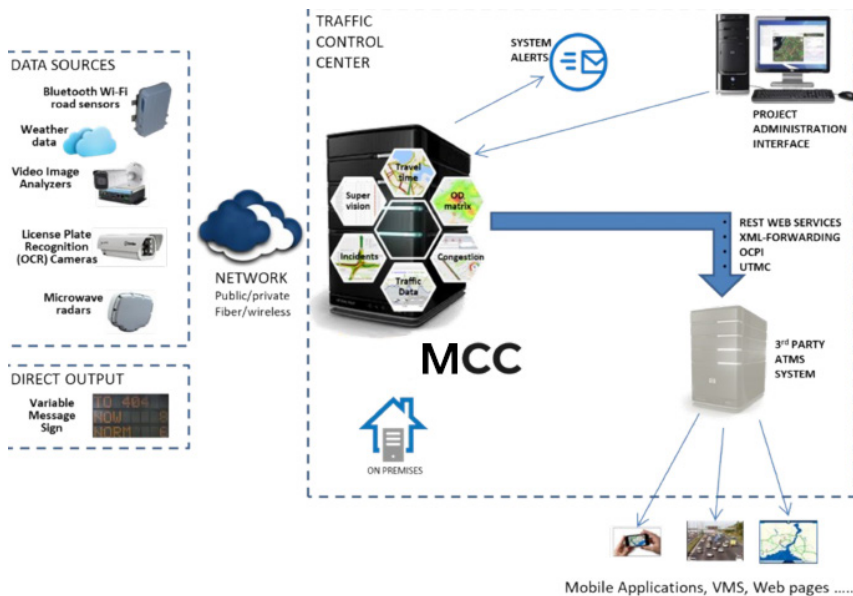
The Multisource Control Center is the data analysis platform designed for a variety of traffic and environmental data sources.

The system analyses data from a wide range of sources and generates, among other things, travel times, congestion and congestion alerts, traffic, environment and environmental data and images. MCC assesses data quality in real time and adjusts data intervals to statistical measurement quality. The system offers a number of different algorithms and filters to adapt to all types of road and infrastructure.

MCC has various KPIs, comparison matrices, asset management for operational monitoring and automatically generated reports.

### Visualisation

Geographical information system Real-time and historical data, forecasting, extensive reporting engine with recurring and adhoc reports, dashboard, key performance indicators.



### SYSTEM

- Multi-sensor platform
- Realtime travel times
- Traffic data
- Realtime origine-destination matrices
- Cloud or local
- Web-based solution
- Multiple user levels
- Multi-language support
- Multiple concurrent sessions
- Easy set-up using GPS and routing engines

### ASSET MANAGEMENT

- Monitoring device integrity
- Battery scandal alerts
- Data transfer logs
- Reboot logs
- Modem diagnostics
- Dynamic IP-updates
- Automatic email notifications
- MQTT remote connections

### OUTPUT

- API REST Web Services (JSON)
- XML forwarding
- DATEX II
- OCPI2
- UTMC

### SAFETY

- Zertified SSL Web (TLS 1.2/1.3)
- UFW Firewall
- AWS Security Groups (Firewall)
- DSGVO data protection compliant

SMART MOBILITY SOLUTIONS  
PRODUCT CATALOGUE

