



**SWISS TRAFFIC**  
we innovate mobility

**SWIROO**  
PART OF SWISSTRAFFIC

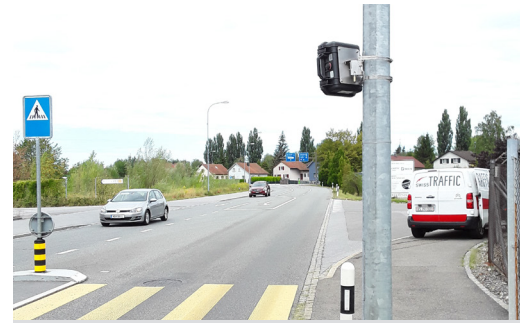
## AI | SWISSRADAR



A lateral radar device for intermittent and/or regular traffic counts, the identification of road sections with excessive vehicle speeds and for the collection of data used in urban traffic development plans.

### TECHNOLOGY

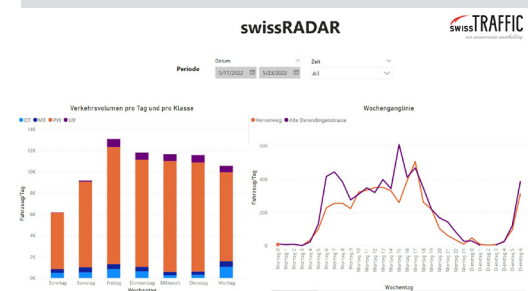
swissRADAR is characterised in particular by its capability for prolonged autonomous operation of up to three weeks without replacing the battery. Can be equipped with Solar and 4G modules to generate real-time data as a permanent counting station. Unsuitable for locations with congestion or stop & go traffic, as these factors distort the results.



Up to 3 weeks of continuous operation possible.



Extended mounting height of between 1 and 8 metres.



Extensive, clearly arranged dashboard



## IDEAL APPLICATION AREAS

- 30 km/h zones
- Counting IMT
- Speed detection

## TECHNICAL FEATURES

- Fixed or mobile counting station
- Autonomous for up to 3 weeks if mobile
- Speeds
- Accurate lane tracking
- Simple installation
- 5 vehicle classes
- GSM

## COMBINABLE PRODUCTS

- swissSAFETY AI
- swissSERVICES



SUBJECT	DESCRIPTION
Accuracy	<ul style="list-style-type: none"> <li>Speed: &lt;100 km/h: 1/- 3 kmm/h, &gt; 100 km/h: 3%</li> <li>Classification: +/- 10% (max. 5 TC classes)</li> <li>Traffic counting: +/- 3%</li> </ul>
Weather	Functions in all weather conditions and at any time of year - frost, snow, fog
Comprehensibe traffic data	<ul style="list-style-type: none"> <li>Number - speed (up to 13 classes), classification (up to 5 TC classes)</li> <li>Date - time recording accurate to the hundredth of a second</li> <li>1 or 2 lanes running in opposite directionsconsecutive TC data and complete software = full data analysis with many table and diagram options</li> <li>Export and storage options in Excel and FIME</li> </ul>
Practical and flexible	<ul style="list-style-type: none"> <li>Extended installation height of 1-8 metres</li> <li>3 weeks continuous operation possible, rechargeable battery</li> <li>Bluetooth; parameter setting and download of stored data from the comfort of the vehicle</li> <li>Choice of communication medium: handheld terminal or laptop for settings and download</li> </ul>
Easy to install	Unique radar mounting and motorised antenna for automatic positioning

**TECHNICAL SPECIFICATIONS**

**Measuring range**  
10 - 255 km/h

**Dimensions**  
245 x 270 x 230 mm with base

**Weight**  
6.7 kg

**Protection class**  
IP64

**Mounting**  
4 holes on the mast mounting for different mounting options

**Operating temperature**  
-30°C to +60°C

**Power supply**  
6V/12Ah batteries, solar regulator

**Continuous operation**  
3 weeks

**Transmitting frequency**  
K band. 24.125 Ghz

**Interface**  
Bluetooth, GPRS option

**Data memory**  
1 Mio measurements

**System requirements**  
Windows XP or newer, minimum 512 MB RAM, 50 Mo memory

SMART MOBILITY SOLUTIONS  
PRODUCT CATALOGUE

