

## AI | SWISSCLASSIFY



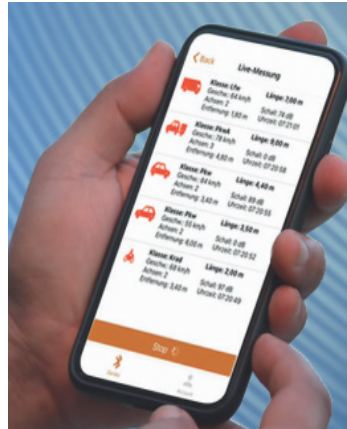
The only system that recognises axles in addition to measuring length and speed. It determines the length of the vehicle, counts the number of axles and measures their distances. As a result, it achieves exceptional detection accuracy.

SWISSCLASSIFY is used for traffic surveys with very different objectives. The precise categorisation into 8+1 vehicle categories is based on various measurement characteristics:

- Vehicle length
- Number of axles
- Axle arrangement of the vehicles
- Axle spacing
- Position of the engine block
- Noise level measurement

In their various versions or designs, the devices are suitable for almost any location.

The new generation is the only detector system that can integrate an environmental sensor in addition to measuring length and speed and detecting axles.



Set up via the iOS and Android app on the smartphone.

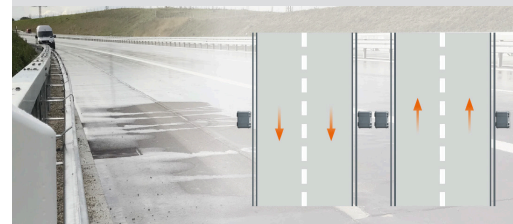


Blends unobtrusively into the landscape. Measurement via box or integration of the system in a standard delineator.



**THANKS**

Can be combined with an LED display



Immediate classification when the vehicle passes the detector, measurement of length and speed, detection of axles, measurement of sound pressure level.



## IDEAL APPLICATION AREAS

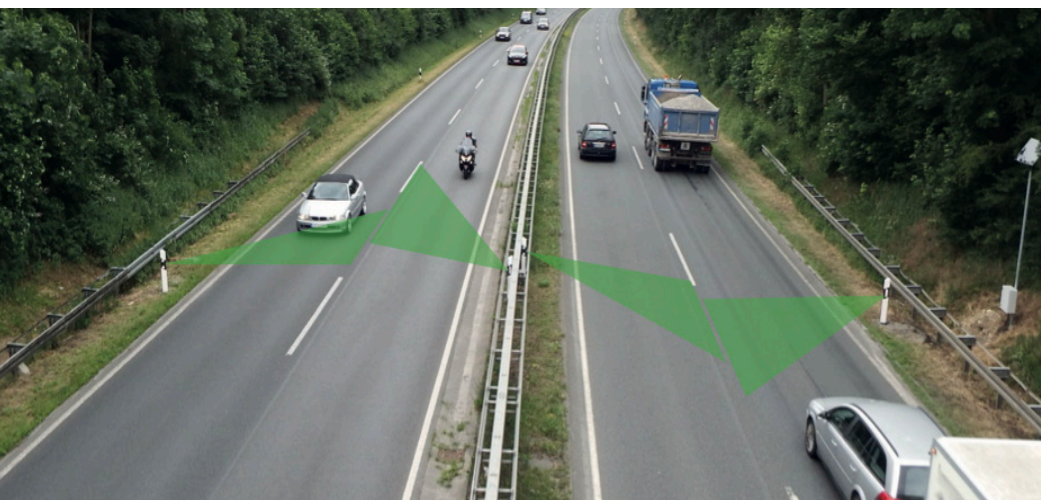
- Use inside and outside built-up areas
- Directing traffic flows
- Increasing road safety
- Avoiding traffic jams

## TECHNICAL FEATURES

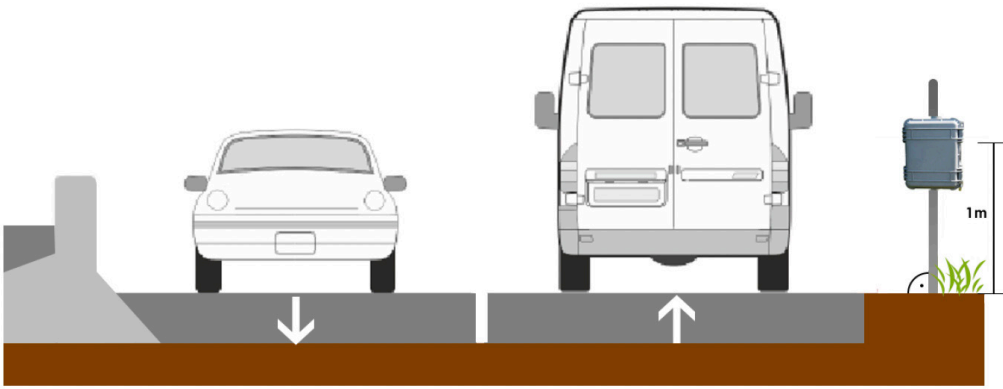
- 10 object classes (SWISS10)
- Permanent or mobile (solar)
- TZ5 certification (BAST)
- Sound pressure level dB (A)
- Memory for up to 950,000 data records
- Real-time traffic data
- Ethernet or LTE

## COMBINABLE PRODUCTS

- SWISSNOISE AI
- SWISSSERVICES



**Orientation swissCLASSIFY**



Mounting height (carriageway level)	80cm to 100cm
Distance from the edge of the carriageway	30cm
Max. distance from the edge of the carriageway	300cm
Angle to the carriageway	90°

**Dimensions**  
408,5mm / 328,5mm / 175mm

**Weight**  
6.61 kg

**Protection class**  
IP55

**Classification**  
10 object classes (SWISS10)

**Speed**  
>100km/h (+/- 3%);  
<100km/h (+/- 3km/h)

**Device Memory**  
950. 000 data records

**GPS accuracy**  
2m - 10m (weather-dependent)

**Communication**  
2G, 3G, 4G (LTE)

**Temperature range**  
-40°C to +70°C

**Energy supply**  
Battery 55 Ah/12V up to 14 days  
Solar

**Interfaces**  
Bluetooth Ethernet RJ-45; S-232,  
SIM card slot

**Real-time traffic data**  
Ethernet, LTE

SMART MOBILITY SOLUTIONS  
PRODUCT CATALOGUE



**SWISSTRAFFIC Group**

[www.swisstraffic.ch](http://www.swisstraffic.ch)  
[www.swiroo.com](http://www.swiroo.com)

**Switzerland**

Zurich  
Ittigen  
Lausanne  
Brig  
Sion

**France**

Paris

**Slovenia**

Ljubljana