



AI | SWISSLIDAR AI



3D Spatial Intelligence - swissLIDAR AI is the perfect combination of a Lidar sensor and advanced software for the precise capture of the environment and advanced real-time processing of 3D data.

VEHICLE MONITORING AND ITS APPLICATIONS

- Multimodal traffic counting and precise identification of near-misses.
- Observation of vehicles and pedestrians to improve the safety of vulnerable road users.
- Monitoring of parking space occupancy for improved operational efficiency.
- Ready-to-use solutions for users (dashboard, KPIs, alerts) and an API.
- Intelligent software built with key building blocks to deliver value in a variety of applications.



DATA PRIVACY
COMPLIANT



WORKS IN ANY
LIGHTING CONDITIONS



CM-LEVEL
ACCURACY



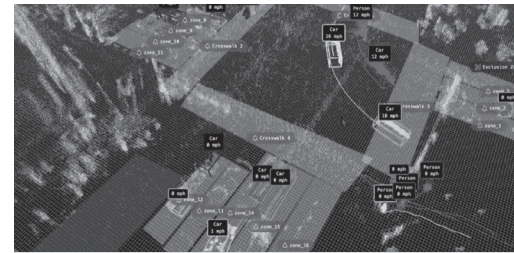
SCALABLE IN
MANY APPLICATIONS



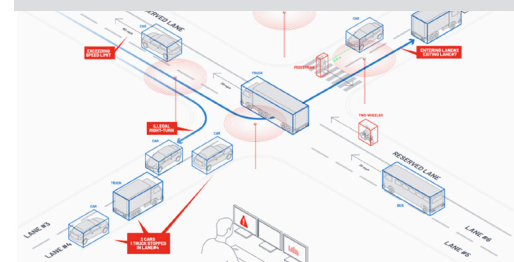
LARGE AREAS
COVERAGE



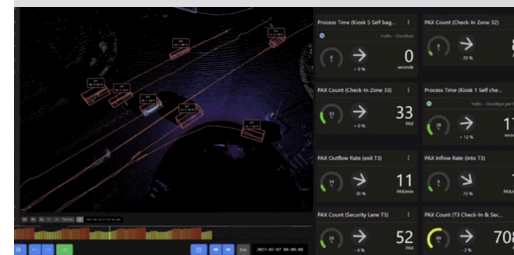
3D NATIVE
SPATIAL INSIGHT



Multimodal real-time monitoring of an entire intersection with the highest precision (cm-accurate) and in compliance with data protection regulations.



Accurate vehicle sizes, distances and speeds. Pedestrians and cyclists are detected up to 90 meters away.



The dashboard displays real-time KPIs, such as the service level for various conditions.

IDEAL APPLICATION AREAS

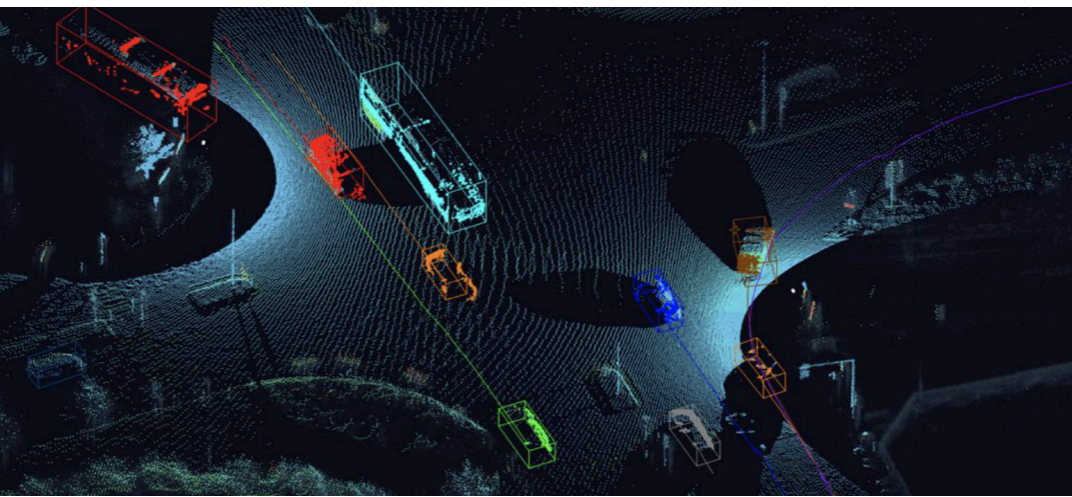
- Traffic flow optimization
- Near misses
- Multimodal counting
- Parking management
- Wrong-way drivers
- Vehicle height
- Object on the road
- Onset/end of traffic jam

TECHNICAL FEATURES

- Standard: 6 object classes
- Mobile or fixed installation
- Optional: SWISS10
- Highest precision (cm)
- Extensive coverage
- Data protection compliant
- All lighting conditions
- Real-time data
- Personal dashboard

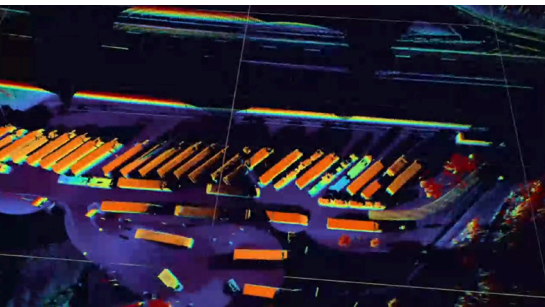
COMBINABLE PRODUCTS

swissDASHBOARD



SWISS TRAFFIC
we innovate mobility

SWIROO
PART OF SWISSTRAFFIC



MOBILE OR FIXED INSTALLATION
MOBILE UP TO 72H AUTONOMY

LASER CLASS
CLASS 1 (EYE-SAFE)

LASER WAVELENGTH
865 NM

POWER CONSUMPTION
14 - 20 W (22 W PEAK AT STARTUP)

OPERATING VOLTAGE
9V - 34 V, 12 V OR 24 V NOMINAL

WEIGHT
400 G

OPERATING TEMPERATURE
-40 °C BIS +60 °C

INGRESS PROTECTION
IP68

MOBILE SOLUTION

Mobile box with pneumatic telescopic antenna 4.8m, 260 kg empty weight, IP67, 1105 x 696mm, 1200W battery 230V with electronic air pump, mounting kit for 2 Lidar, 4x batteries 800Ah/12V for autonomy up to 72h.

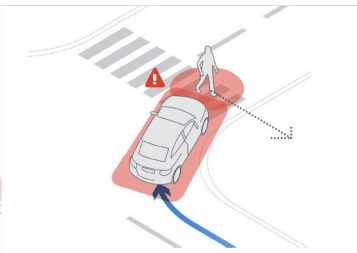
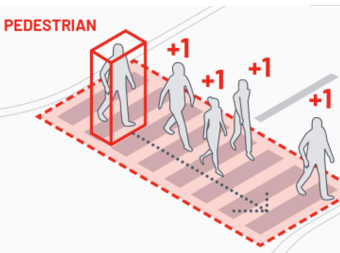


SMART MOBILITY SOLUTIONS
CATALOGUE DES PRODUITS

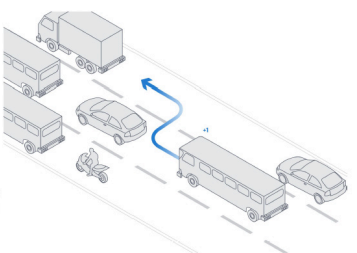
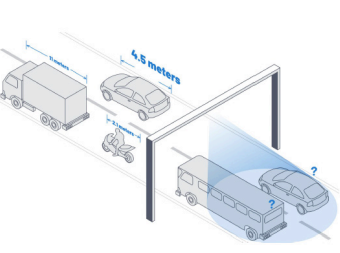


Real-time detection of truck parking at motorway service areas.

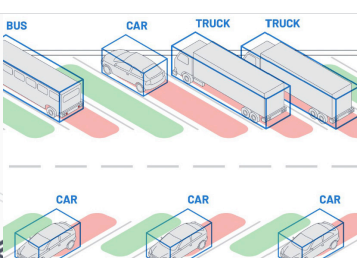
Highest detection accuracy in all light and weather conditions.



Pedestrian crossing
Counting, safe crossing, wrong crossing, pedestrian flow, near accident, alerting....



Street
Counting, vehicle classes, speeds, beginning and end of congestion, lane changes, wrong turns, vehicle height, wrong-way drivers, objects on the road...



Stopping zones
Parking management, unauthorised parking, stop bar, stop bar violation...

SWISSTRAFFIC Group

www.swisstraffic.ch
www.swiroo.com

Switzerland

Zurich
Ittigen
Lausanne
Brig
Sion

France

Paris

Slovenia

Ljubljana