



AI | SWISSDISPLAY AI

Intelligent traffic management with AI for cities and municipalities. GDPR compliant LED displays without compromise. Multimodal counting up to 17 object classes. Counts also pedestrians and bicycles. Dynamic information panel with integrated control tool.

Display board without limitations

Bicycle counter

With an AI camera, data is instantly displayed on the good resolution LED display. Collected data can instantly be forwarded to desired server or platform and/or stored on the onboard storage.

Information board

From control room platform or from local controller algorithm, information's can be displayed, etc. re-routing of traffic, warnings or public information.

The eye on the road

Gain access to see what's happening in the area through streaming video, in case of emergency, accident or general traffic flow.

Slippage warning

If required, the swissDISPLAY can also record roa temperatures and display automatic skid warnings. The warning data can also be forwarded to control center.

Sensor data point

The swissDISPLAY has a powerful controller, which can support several sensor types and can be extended to desired sensor type. Collected data can be forwarded in real-time, as data or alarm messages or stored on the controller for up to 12 months.

The controller can control external devices, such as parking booms, lights etc. Typical sensor are:

- AI camera
- Road and air temperature sensor
- Air quality sensor
- Speed radar

Online or offline

Due to the powerful internal controller, the swissDISPLAY can operate as standalone, edge or online device. Connectivity, can be 4G, LAN or WAN based wired connection.



AI Display board with AI camera



Modern and customizable Dashboard



Good resolution LED display

Example of an installation in Copenhagen





Clever details

Bicycle Counter

AI camera data is real-time with less than 100 ms latency till the display show the result which give ability to detect on shorter distance and with higher accuracy.

Buffered data collection

Most AI cameras does not buffer the collected data in the event that the 4G connection is lost, the collection stops. The SWISSDISPLAY solved this problem, by buffering up to 12 months data, which as soon as the 4G connection is back, it will forward all collected data with the correct time stamps, so NO DATA IS LOST.

GDPR compliant

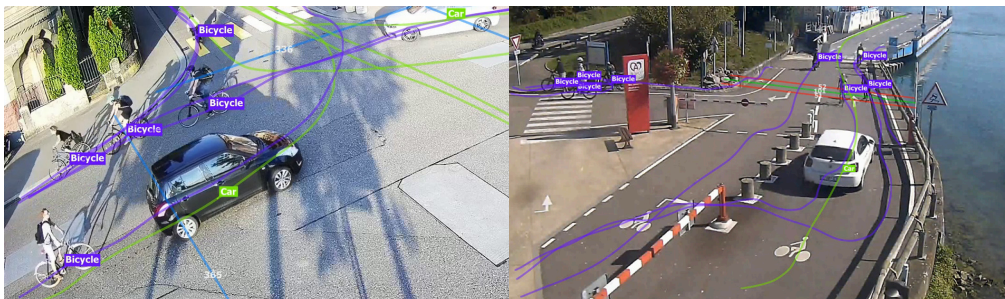
Thanks to the local processing the solution is 100% GDPR compliant. The SWISSTRAFFIC CAMERA AI is also able to automatically blur faces and vehicles number plates.

Superior up-time

By a superior health check and healing algorithms, the controller and connected devices are controlled and maintained for maximum self-healing operation. Even often unstable devices are kept alive. Reducing maintenance to actual broken hardware and give freedom to be more experimental in choice of external devices.

Specifications

- Multimodal counting with AI
- Up to 17 object classes
- LED Display in real time
- Dynamic Information-Panel
- Integrated Control Tool
- Resolution:** 128x128 pixel
- Power consumption:** 115 watt
- Dimension:** 768x768x180mm
- Weight:** 32kg
- Installation:** Side or Center
- Internet connection:** 4G/5G or wired
- AI Camera:** Optional
- OS:** Linux



Parking solution, with free parking slot visualisation

SMART MOBILITY SOLUTIONS
PRODUCT CATALOGUE



SWISSTRAFFIC Group

www.swisstraffic.ch
www.swiroo.com

Switzerland

Zurich
Ittigen
Lausanne
Brig
Sion

France

Paris

Slovenia

Ljubljana